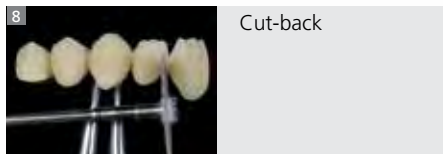
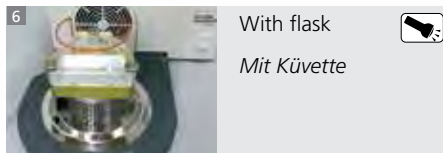
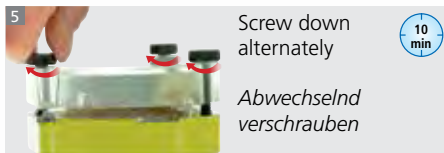
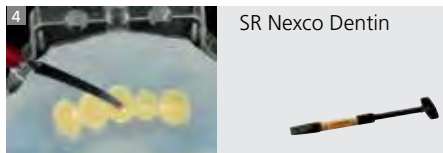
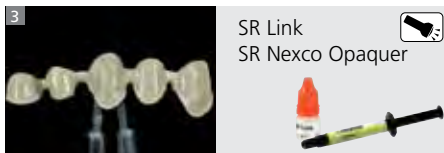
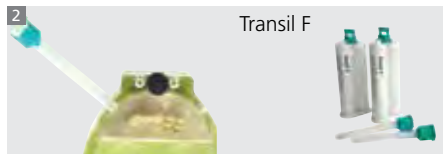
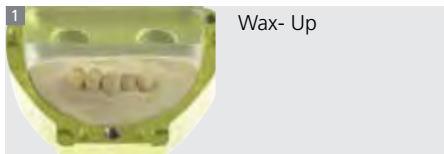


SR Nexco® Flask Press

Short instructions
Kurzanleitung



SR Nexco® Flask Press



SR Nexco® Flask Press



SR Nexco Stains
SR Nexco Paste Effect



SR Nexco Paste Incisal



Screw down
alternately

*Abwechselnd
verschrauben*



With flask
Mit Küvette



Without flask
Ohne Küvette



Finishing and
polishing
*Finieren und
polieren*



see instructions

 Polymerization Parameters / Polymerisationstabelle

Device	Manufacturer	Opaque*	Dentin**	Liner, Incisal, Effect**, Margin**	Gingiva**	Stains***	SR Connect	Final Polymerization
Quick Lumamat 100	Ivoclar Vivadent AG	20 s Quick P2 / 11 min	20 s Quick	20 s Quick	20 s Quick	20 s Quick	P2 / 11 min	P2 / 11 min
Spectramat	Ivoclar Vivadent AG	5 min	5 min	2 min	5 min	2 min	2 min	5 min
Labolight LV-III	GC	5 min	2 min	2 min	5 min	2 min	3 min	5 min
Solidilite V	Shofu	3 min	1 min	1 min	3 min	1 min	3 min	5 min
Visio Beta Vario	3M Espe	7 min without vacuum	4x 20 s Visio Alfa	4x 20 s Visio Alfa	4x 20 s Visio Alfa	4x 20 s Visio Alfa	4x 20 s Visio Alfa	2x 7 min without vacuum
HiLite	Heraeus	180 s	90 s	90 s	90 s	90 s	90 s	180 s

Important information:

Regular maintenance and functional control of polymerization devices is required.

Notes:

Units suitable for intermediate curing: Quick (Ivoclar Vivadent AG),

HiLite pre (Heraeus), Visio Alfa (3M), Sublite V (Shofu), Steplight SL-I (GC).

* Thinly apply a first layer of opaque and precure it. Then apply the second layer of opaque so that it covers the entire surface and cure it as indicated in the polymerization table.

** Observe the maximum layer thickness! Precure, if required.

*** Stains should only be applied in extremely thin layers – a very low curing depth is achieved with dark shades.

Wichtige Information:

Regelmässige Wartung und Funktionskontrolle der Polymerisationsgeräte wird vorausgesetzt.

Hinweise:

Geräte zum angelieren: Quick (Ivoclar Vivadent AG), HiLite pre (Heraeus), Visio Alfa (3M), Sublite V (Shofu), Steplight SL-I (GC).

* erste Opaquerschicht dünn auftragen und zwischenhärten, zweite Opaquerschicht deckend auftragen und nach Polymerisationstabelle härten.

** maximale Schichtstärken beachten! Ggf. zwischenhärten.

*** Stains nur in dünnsten Schichtstärken auftragen – sehr geringe Durchhärtung bei dunklen Farben.



see instructions

Ivoclar Vivadent AG
FL-9494 Schaam / Liechtenstein
www.ivoclarvivadent.com

Date information prepared: 2014-08-xx, Rev. 0

673059d/e